

Construction

G-H Group is a Construction Management and General Contracting Firm specializing in Hospital, Medical/Surgical, Commercial, Retail Shopping Center, Multi-Residential and Restoration Construction.

Property Management

G-H Group provides Property Management and Maintenance Services for Hospital, Medical/Surgical, Retail Shopping Center and Office Complex Clients.

Design/Build Land Development

G-H Group provides complete Design Build services and will assist in land acquisition, rezoning, land development and utility placement.

Medical Construction

- ***Behavioral Center of Michigan Hospital***
- ***Behavioral Center of Michigan Day Hospital***
- ***Beacon Hill Medical Center***
- ***Georgetown Medical Center***
- ***Tuscola County Medical Care***
- ***Lifetime Home Care Facility***
- ***Professional Medical Services***
- ***Heartland Rehabilitation Centers***

Commercial

- ***Silverman Realty Office***
- ***Holtzman & Silverman Realty***
- ***Winnick Corporation***
- ***Lifetime Fitness***

Restoration

- ***Talon Building***
- ***Milner Hotel***
- ***Detroit Tower***
- ***United Artist Building***
- ***Joe Louis Arena***

Awards & Memberships

- ***2003 & 2004 AIA Detroit Honor Award***
- ***CAM***



The Behavioral Center of Michigan Hospital
4050 East 12 Mile Road
Warren, MI 48092
50,000/SF
Project Budget: \$4,500,000

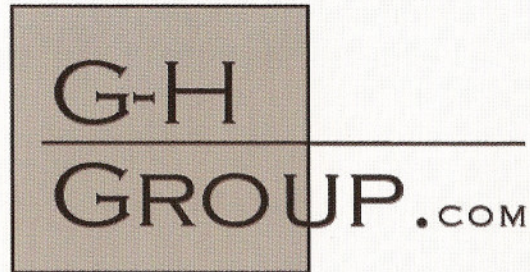


Lifetime Fitness
Midwest Facilities
120,000+/SF
Project Budget: \$150,000

G-H Group strives to achieve excellence in every endeavor. The platform for excellence is diligence, hard work, critical attention to detail and creative approaches to problem solving.

Managing Partners are personally involved in the construction process to ensure efficient and successful completion.

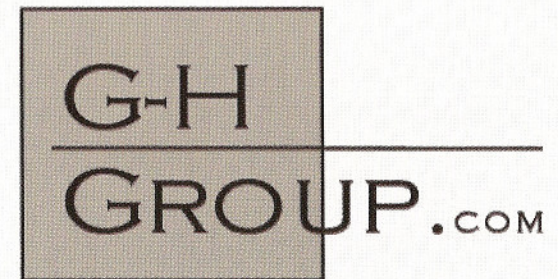
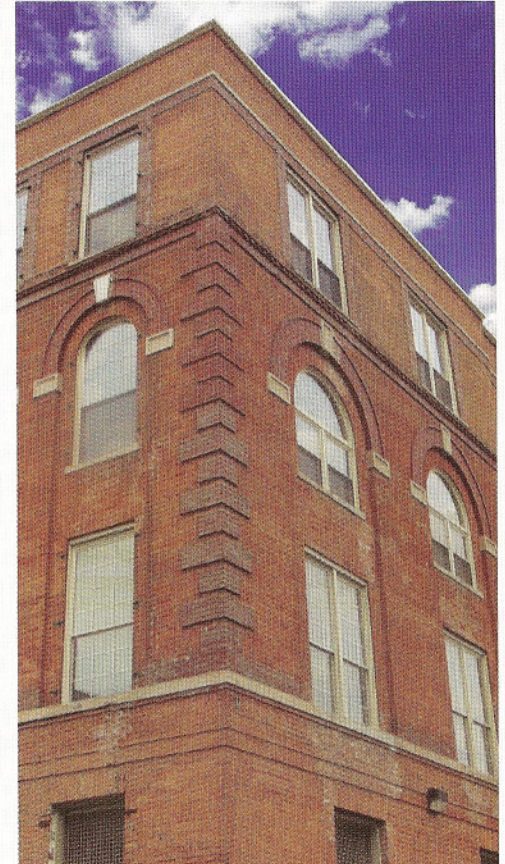
G-H Group focuses on maintaining low overhead and 'Just In Time' delivery to keep costs within budget. Real time updates, electronic communication, and detailed documentation delivers our projects on schedule. Eager, innovative, tenacious and fearless leadership is the backbone of **G-H Group**.



Robert E. Galacz
Managing Partner
248.705.3333
regalacz@g-hgroup.com

John G. Harte
Managing Partner
248.755.7574
jgharte@g-hgroup.com

G-H Group, LLC
Main Office
18161 West 13 Mile Road
Lower Level
Southfield, MI 48076
248.505.1785 Main
248.230.4168 Fax
GH@g-hgroup.com



WWW.G-HGROUP.COM

On Scope On Schedule On Budget